

Main Street Commercial Presents

# The Bayview Hotel

*Historic Icon of Aptos Village*



8041 SOQUEL DRIVE

APTOS, CA

\$2,950,000



# PROPERTY SUMMARY

The Iconic Bayview is a fully-equipped Hotel with Bar and Grill on an historic setting marked by what is believed to be the largest magnolia tree anywhere on the West Coast. Long recognized as one of the significant buildings in the County, this Italianate masterpiece presides at the heart of newly-revitalized Aptos Village, surrounded by the area's hottest shops and restaurants, with views of the Monterey Bay in the distance.

Upon entering the lobby, you are greeted with a sense of the history within its hallowed halls, under high ceilings of stamped metal. The towering bar has operated with a type 47 liquor license which can be separately acquired. The facility is also provided with a full commercial kitchen that has been put to good use for events both small and large.

To the rear, a broad patio opens out to the remaining relics of the lush gardens that bedeck its outdoor venues and carry echoes of the many memories that have been celebrated here through the years. In all, the hotel offers 14 state rooms, most of which include en-suite baths or showers, including several suites which have been traditionally reserved for use by its operators and/or staff.

This is a rare opportunity, offered on the 50-year anniversary of its dedication as a landmark on the historic registry.



# PROPERTY HIGHLIGHTS

**Address:** 8041 SOQUEL DRIVE, APTOS

**Parcel Number:** 041-011-55-000

**Parcel Size:** 0.875 AC/38,093

**Total SF:** SqFt 9,785 SqFt

**Price Per SF** \$301.48

**Price Per LSF** \$91.88

**Style:** Multi-Family, 5+ Units

**Bedrooms:** 14 3 1878 C-2-L 16

**Floors:**

**Year Built:**

**Zoning:**

**Parking Spaces:**



### **Stunning Italianate Architecture**

The Bayview Hotel showcases exquisite Italianate design, characterized by its elegant high ceilings and intricate stamped metal details, making it a visual delight and a piece of history.

### **14 State Rooms**

The hotel boasts 14 well-appointed state rooms, many equipped with en-suite baths or showers, providing guests with comfortable and private accommodations.

### **Bar and Grill & Type 47 License**

The lively bar and grill is a perfect spot for socializing, featuring a Type 47 liquor license that adds a vibrant atmosphere to the hotel's offerings. Type 47 License available separately.

### **Scenic Location**

Nestled in the heart of Aptos Village, the hotel offers breathtaking views of Monterey Bay, allowing guests to enjoy the beauty of California's coastline right from the property.

### **Commercial Kitchen**

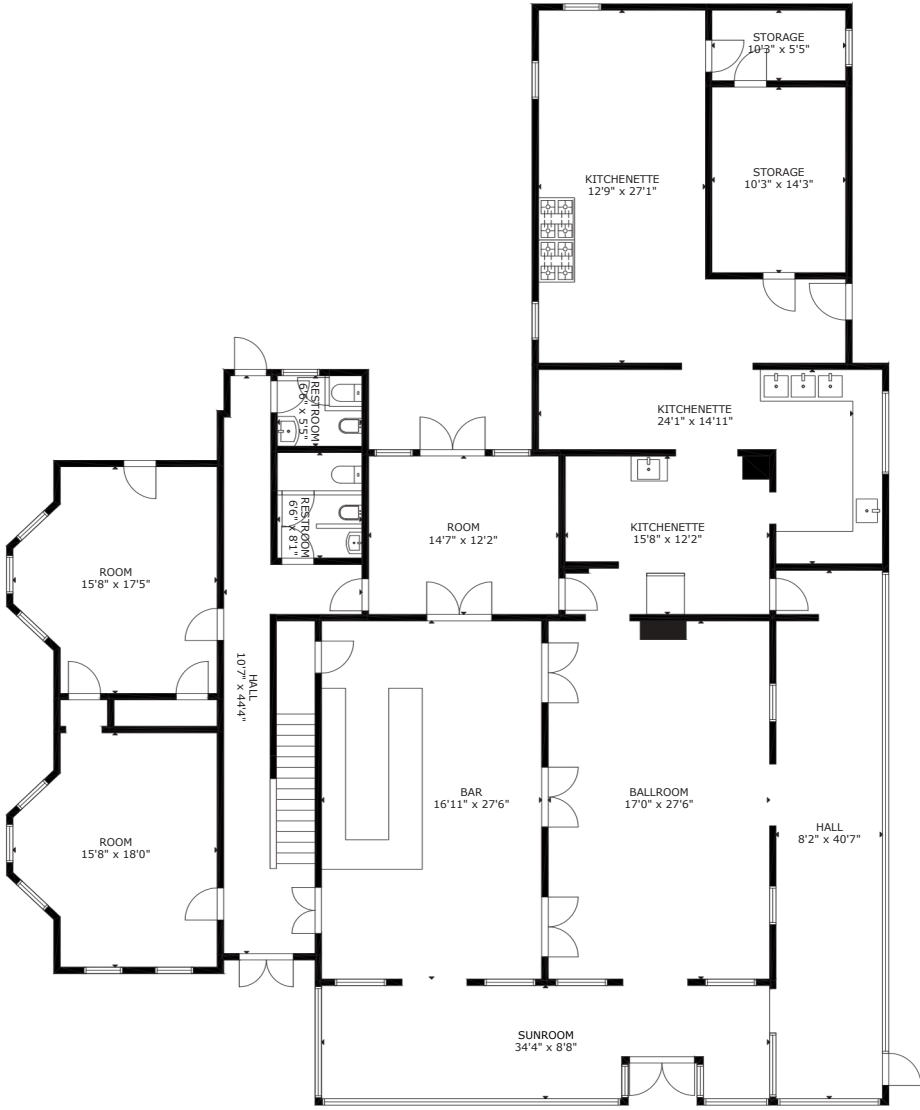
The fully-equipped commercial kitchen has been expertly utilized for hosting events of all sizes, ensuring that both guests and locals can enjoy delicious meals in a historic setting.

### **On-Site Manager's Apartment**

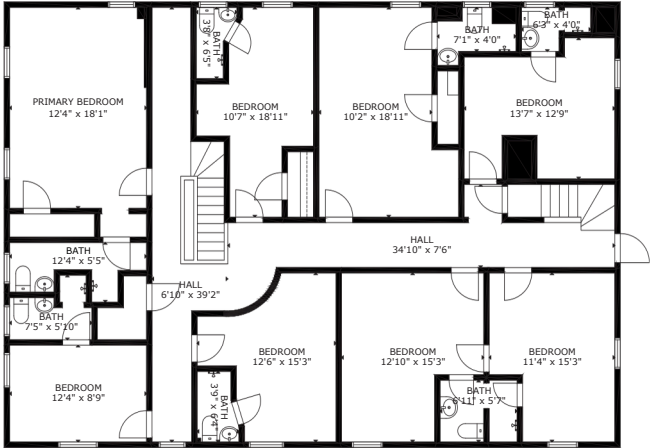
The property includes accommodations for on-site management, ensuring that operations run smoothly while providing a convenient living arrangement for staff.

**FEATURES &  
DETAILS**

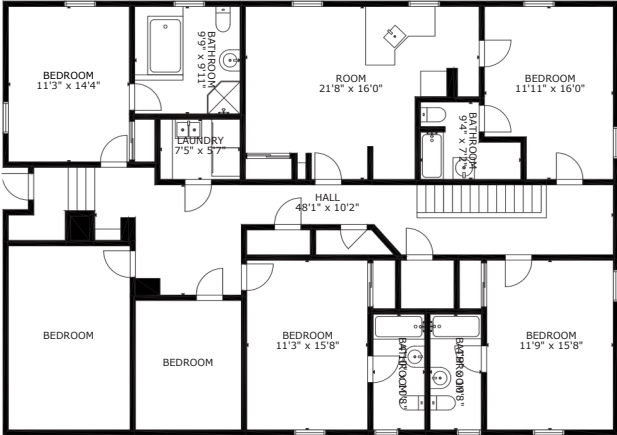
# PROPERTY FLOORPLANS



**MAIN FLOOR**



**MIDDLE FLOOR**

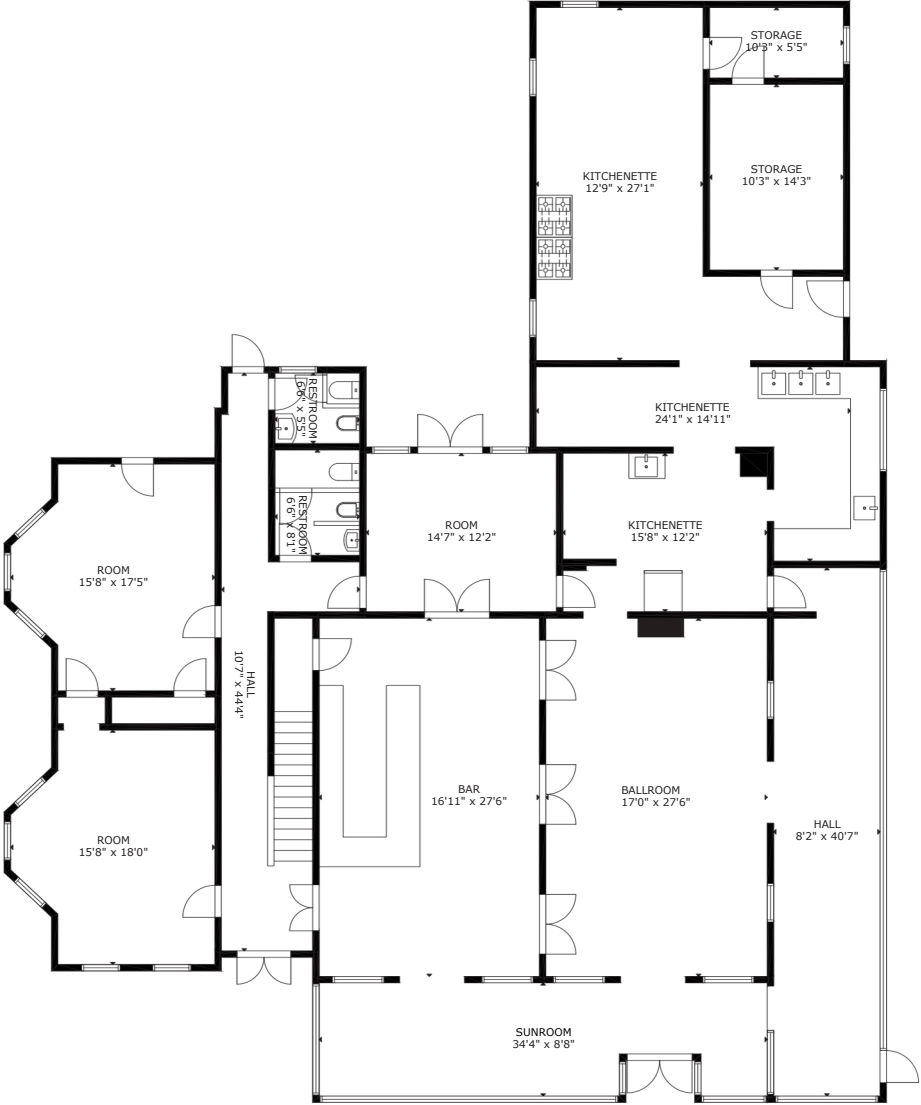


**TOP FLOOR**

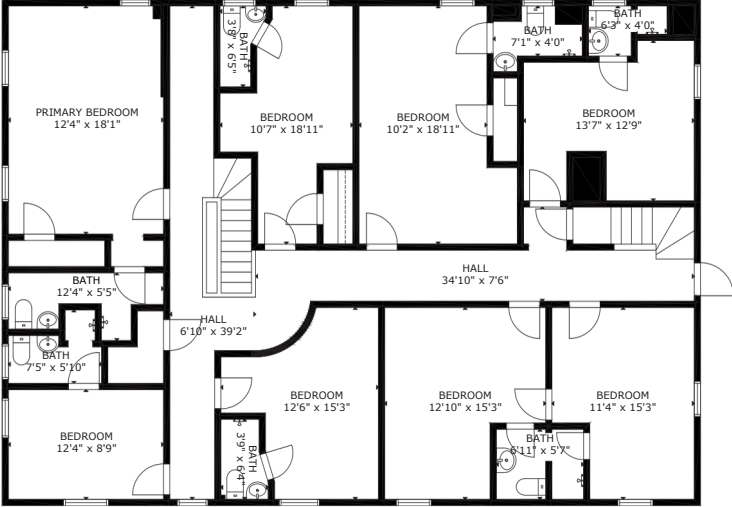


**ADDITIONAL LIVING QUARTERS**

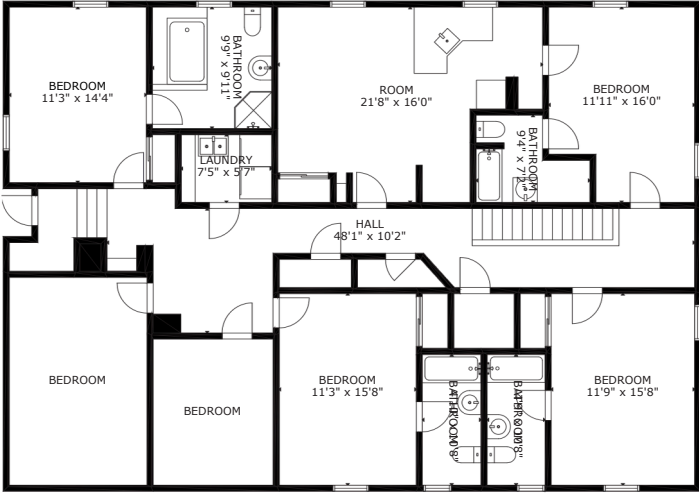
# PROPERTY FLOORPLANS



**MAIN FLOOR**



**MIDDLE FLOOR**



**TOP FLOOR**



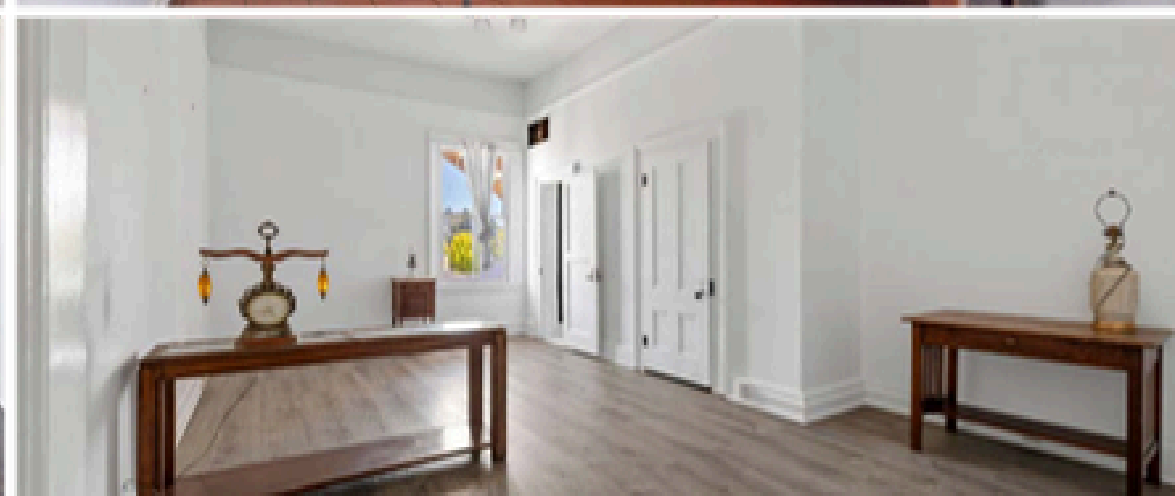
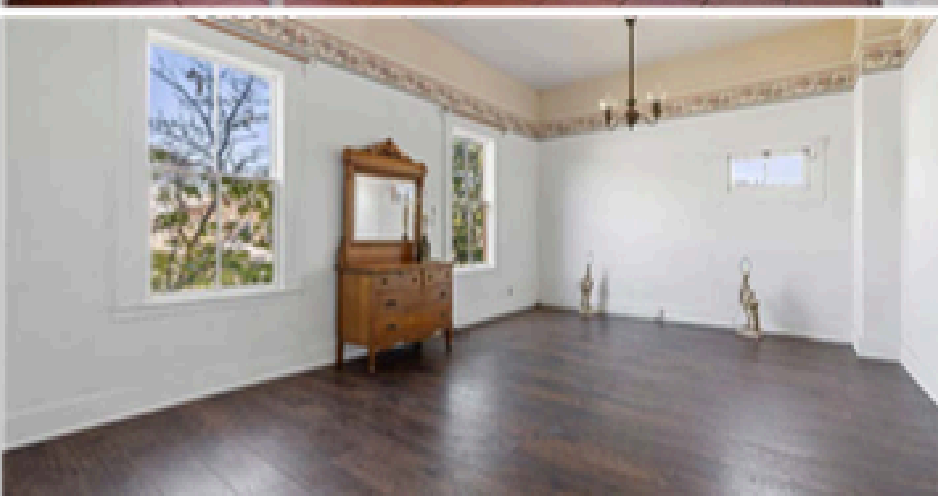
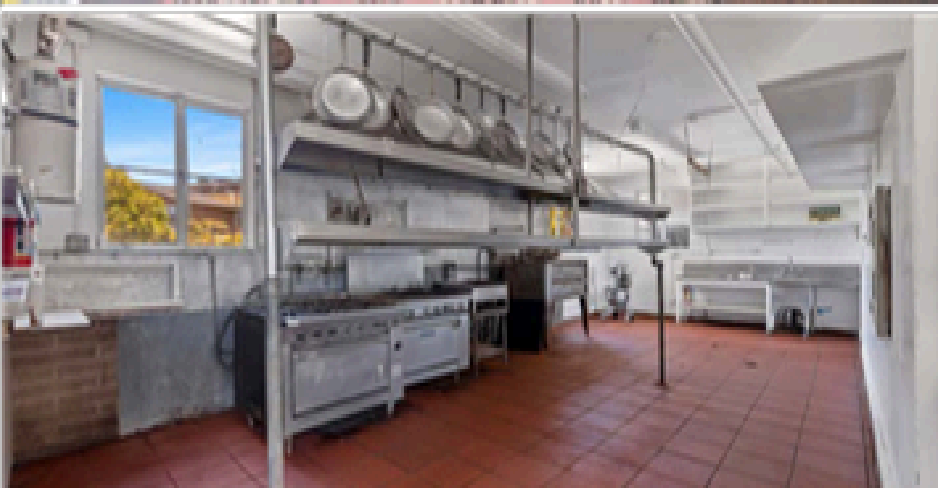


# AERIAL MAP

1080 & 1090 PALMETTO AVENUE, APTOS, CA 95024











# PROXIMITY MAP

# LOCATION OVERVIEW

The quaint town of Aptos is in an unincorporated area of Santa Cruz County that includes Rio Del Mar, Seacliff, and Seascope areas. It is also the home of historic Aptos Village, and the gateway to the Forest of Nisene Marks State Park. Hikers, runners and mountain bikers enjoy the 30 miles of trails where remnants of mill sites and trestles still exist. The park, covering 10,000 acres and once clear-cut by loggers, is a testament to forest regeneration where second-growth redwoods coexist with new foliage. Traces of the once-bustling railroad and logging industry can still be found. For more history, the Aptos History Museum houses a collection of artifacts and photographs tracing the history from native Ohlone Indians who named the area to the 1989 Loma Prieta earthquake.

Nearby, Seacliff State Beach is the perfect spot for a cookout or picnic, with barbecue grills and shaded tables along the sand. Stop by the visitor center and learn about the Pacific wildlife migration pattern. A mile-long seaside paved path runs parallel to the ocean, adjacent to fossils of extinct marine creatures embedded in the bluffs. Remnants of “The Cement Ship,” a local landmark, the S.S. Palo Alto, can be seen resting just off the coastline. An experimental concrete ship built as a tanker at the end of World War I, “The Cement Ship” – which elegantly leans to its starboard side as a result of winter storms – now serves as an artificial reef for marine life, and celebrated its 100th birthday in 2019.

On the south side of the pier, Rio Del Mar State Beach is THE spot for dog lovers and beach fires. Another pet-friendly activity is Aptos’ “World’s Shortest Parade” on the Fourth of July morning which includes nearly every Aptos resident – and pet – dressed in red, white and blue splendor, and which ends at Aptos Village Park with live music and fun. A vibrant new town center graces the heart of Aptos Village, a pedestrian-friendly spot where artisan ice cream, local retailers, small-batch coffee, destination eateries, and a small park combine to add local flair to this mid-county destination.



# CONTACT INFORMATION



**DATTA KHALSA, CABB**

Broker / Principal | DRE#01161050

T: 831.818.0181

E-Mail: [datta@mainstrealtors.com](mailto:datta@mainstrealtors.com)

**Main Street Realtors**

2567 Main Street | Soquel, CA 95073

[www.MainStRealtors.com](http://www.MainStRealtors.com)

DRE#02114145



The information contained in this communication is strictly confidential. This information has been obtained from sources believed to be reliable but has not been verified. NO WARRANTY OR REPRESENTATION, EXPRESS OR IMPLIED, IS MADE AS TO THE CONDITION OF THE PROPERTY (OR PROPERTIES) REFERENCED HEREIN OR AS TO THE ACCURACY OR COMPLETENESS OF THE INFORMATION CONTAINED HEREIN, AND SAME IS SUBMITTED SUBJECT TO ERRORS, OMISSIONS, CHANGE OF PRICE, RENTAL OR OTHER CONDITIONS, WITH- DRAWAL WITHOUT NOTICE, AND TO ANY SPECIAL LISTING CONDITIONS IMPOSED BY THE PROPERTY OWNER(S). ANY PROJECTIONS, OPINIONS OR ESTIMATES ARE SUBJECT TO UNCERTAINTY AND DO NOT SIGNIFY CURRENT OR FUTURE PROPERTY PERFORMANCE.